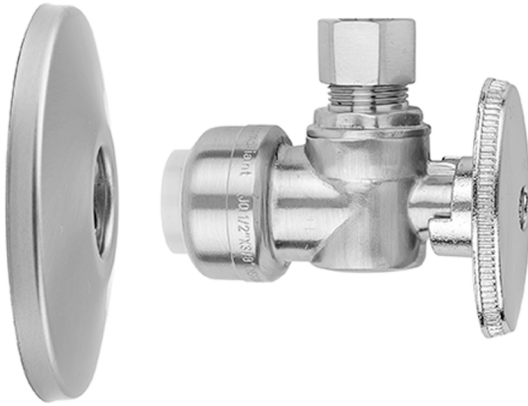


Quarter Turn Angle Pattern 1/2" Push Fit x 3/8" O.D. Supply Valve with Escutcheon

Model #: 638PF-KIT-

FEATURES:

- Kit contains Push-Fit valve (angle), an escutcheon, and Push-Fit clip
- Fast & easy installation
- Quarter turn valve
- 1/2" Push Fit x 3/8" O.D. Compression
- For use with 1/2" Copper, CPVC, or Pex
- Available in PCH & SN Only



AVAILABLE FINISHES:

Polished Chrome (PCH) Satin Nickel (SN)

SPECIFICATION DRAWING:

